

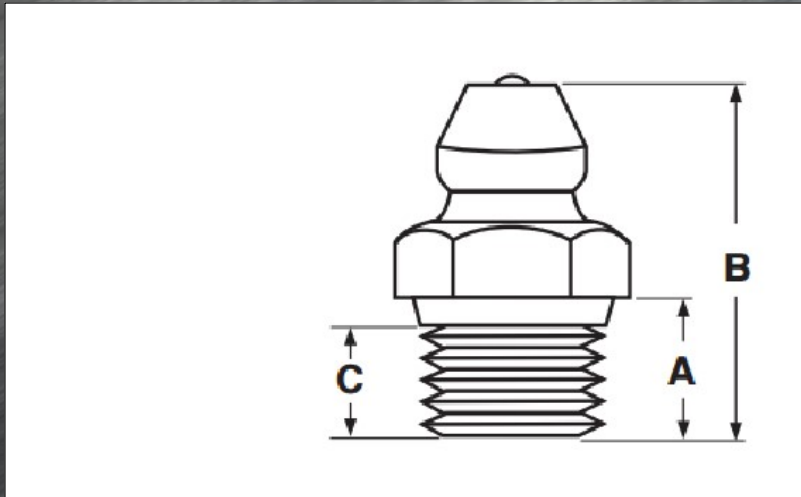


545 Basket Road
Webster, NY 14580

Toll Free: 800.691.0292 | Local: 585.265.1990 | Fax: 585.265.6678

www.fastenersdirect.com
sales@fastenersdirect.com

TAPER & PIPE THREAD GREASE FITTINGS



Grease Fitting—SPL Taper Thread

Part #	Type	Thread	A	B	C	Recommended Hole Size		Hex Size Across the Flats
			Shank Length	Total Height	Effective Thread Length	Max	Min	Ref
			Ref	Ref	Ref			
	Straight	1/4-28	13/64	9/16	9/64	0.235	0.230	5/16

DESCRIPTION: A fastener that has external threads at one end and a nipple-style connection at the opposite end. The nipple consists of an opening in which a small captive ball bearing maintains its location flush with the surface of the fitting by the force supplied by a retaining spring within the fitting.

APPLICATIONS/ADVANTAGES: Used on mining, agricultural and industrial equipment when regularly scheduled lubrication maintenance is required to extend the lifespan of machinery. Installation force causes material of untapped hole to reshape conforming to fitting thread contour, providing a leak proof permanent seal.

MATERIAL: Carbon Steel

CASE DEPTH: 0.13—0.23 mm

CASE HARDNESS: Rockwell 15N 83 minimum

PLATING: Parts are supplied RoHS zinc finish.

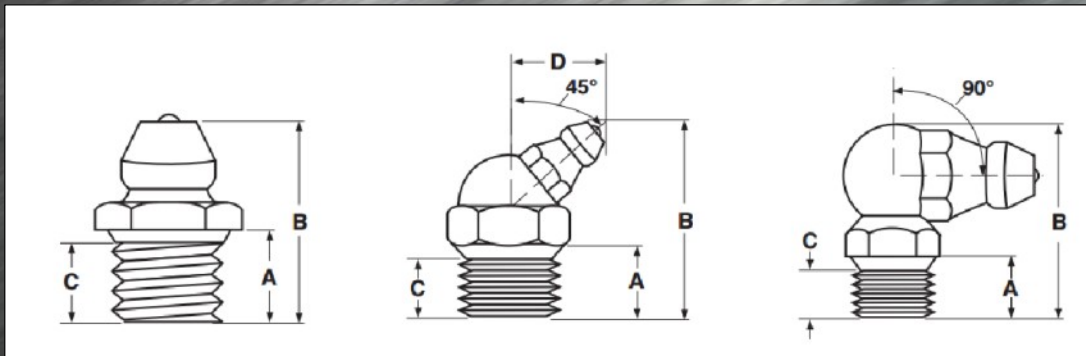


545 Basket Road
Webster, NY 14580

Toll Free: 800.691.0292 | Local: 585.265.1990 | Fax: 585.265.6678

www.fastenersdirect.com
sales@fastenersdirect.com

TAPER & PIPE THREAD GREASE FITTINGS



Grease Fitting—SPL Pipe Thread

Part #	Type	Thread	A	B	C	D	Recommended Hole Size		Hex Size Across the Flats
			Shank Length	Total Height	Effective Thread Length	Check Valve Distance	Max	Min	Ref
			Ref	Ref	Ref	Ref			
	Straight	1/8-27	15/64	5/8	9/64	-	.380	.373	7/16
	Elbow	1/8-27	13/64	27/32	11/64	29/64	.380	.373	7/16
	Elbow	1/8-27	13/64	3/4	11/64	17/32	.380	.373	7/16

DESCRIPTION: A fastener that has external threads at one end and a nipple-style connection at the opposite end. The nipple consists of an opening in which a small captive ball bearing maintains its location flush with the surface of the fitting by the force supplied by a retaining spring within the fitting.

APPLICATIONS/ADVANTAGES: Used in mining, agricultural and industrial equipment when regularly scheduled lubrication maintenance is required to extend the lifespan of machinery. Installation force causes material of untapped hole to reshape conforming to fitting thread, contour, providing a leak proof permanent seal.

MATERIAL: Carbon Steel

CASE DEPTH: 0.13—0.23 mm

CASE HARDNESS: Rockwell 15N 83 minimum

PLATING: Parts are supplied RoHS zinc finish.

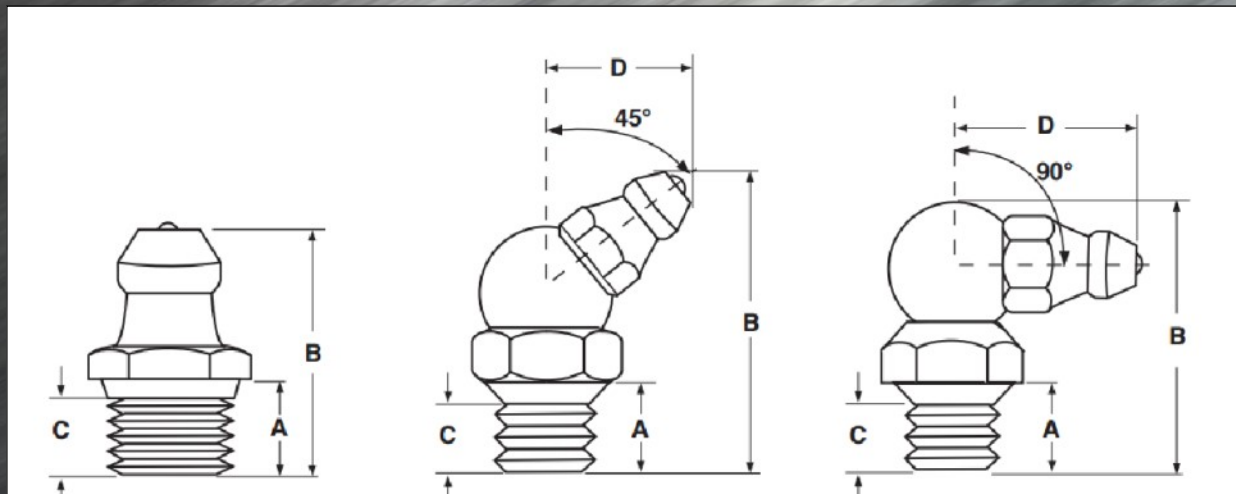


545 Basket Road
Webster, NY 14580

Toll Free: 800.691.0292 | Local: 585.265.1990 | Fax: 585.265.6678

www.fastenersdirect.com
sales@fastenersdirect.com

TAPER & PIPE THREAD GREASE FITTINGS



Grease Fitting—SAE-LT Taper Thread

Part #	Type	Thread	A Shank Length Ref	B Total Height Ref	C Effective Thread Length Ref	D Check Valve Distance Ref	Hex Size Across the Flats Ref
	Straight	1/4-28	3/16	35/64	9/64	-	5/16
	Elbow	1/4-28	7/32	27/32	5/32	7/16	3/8
	Elbow	1/4-28	7/32	3/4	5/32	33/64	3/8

DESCRIPTION: A fastener that has external threads at one end and a nipple-style connection at the opposite end. The nipple consists of an opening in which a small captive ball bearing maintains its location flush with the surface of the fitting by the force supplied by a retaining spring within the fitting.

APPLICATIONS/ADVANTAGES: Used in mining, agricultural and industrial equipment when regularly scheduled lubrication maintenance is required to extend lifespan of machinery. These fittings are designed to be installed into straight holds with 1/4-28" UNF 3B straight thread.

MATERIAL: Carbon Steel

CASE DEPTH: 0.13—0.23 mm

CASE HARDNESS: Rockwell 15N 83 minimum

PLATING: Parts are supplied RoHS zinc finish.

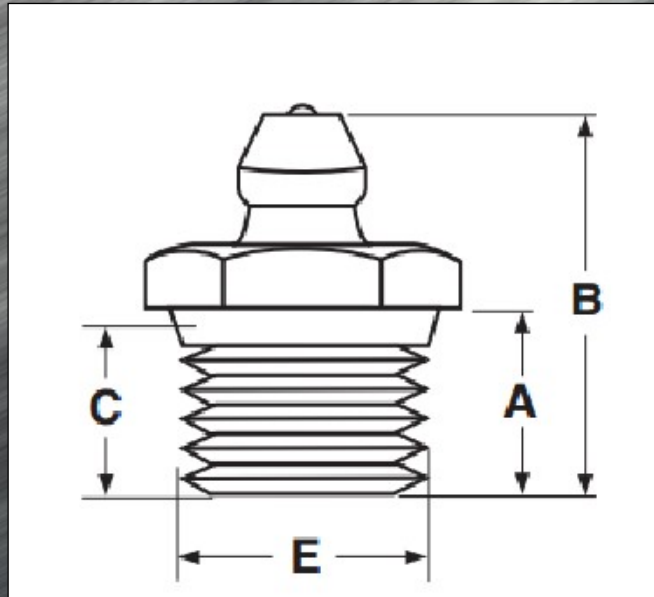


545 Basket Road
Webster, NY 14580

Toll Free: 800.691.0292 | Local: 585.265.1990 | Fax: 585.265.6678

www.fastenersdirect.com
sales@fastenersdirect.com

TAPER & PIPE THREAD GREASE FITTINGS



Grease Fitting—PTF Pipe Thread

Part #	Type	Thread	A Shank Length Ref	B Total Height Ref	C Effective Thread Length Ref	E Thread Outside Diameter Ref	Hex Size Across the Flats Ref
	Straight	1/4-18/	3/8	53/64	19/64	0.540	9/16

DESCRIPTION: A fastener that has external threads at one end and a nipple-style connection at the opposite end. The nipple consists of an opening in which a small captive ball bearing maintains its location flush with the surface of the fitting by the force supplied by retaining spring within the fitting.

APPLICATIONS/ADVANTAGES: Used on mining, agricultural and industrial equipment when regularly scheduled lubrication maintenance is required to extend the lifespan of machinery. These fittings are recommended where heavy lubricants are used.

MATERIAL: Carbon Steel

CASE DEPTH: 0.13—0.23 mm

CASE HARDNESS: Rockwell 15N 83 minimum

PLATING: Parts are supplied RoHS zinc finish.