

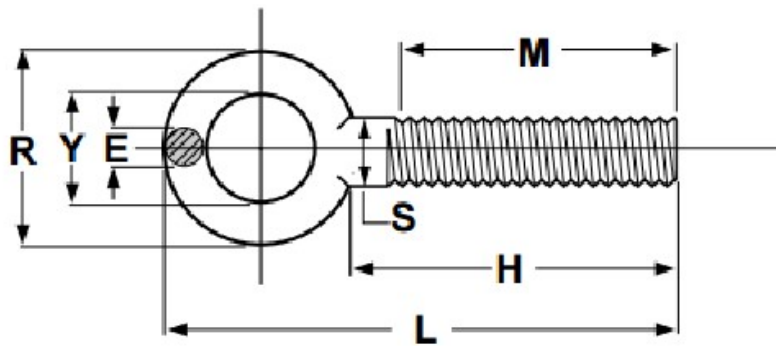


545 Basket Road  
Webster, NY 14580

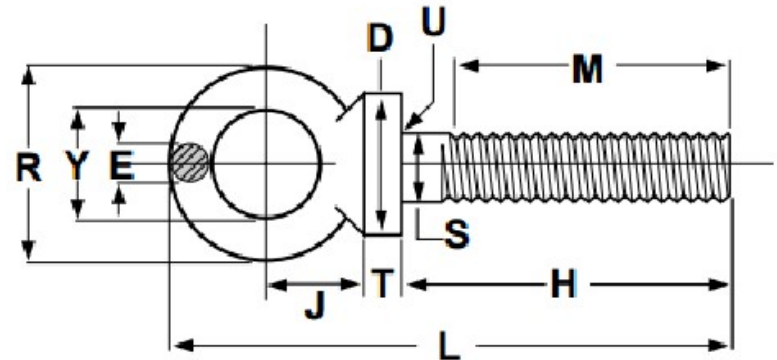
Toll Free: 800.691.0292 | Local: 585.265.1990 | Fax: 585.265.6678

www.fastenersdirect.com  
sales@fastenersdirect.com

## FORGED EYE BOLTS



**PLAIN PATTERN**



**SHOULDER PATTERN**



545 Basket Road  
Webster, NY 14580

Toll Free: 800.691.0292 | Local: 585.265.1990 | Fax: 585.265.6678

www.fastenersdirect.com  
sales@fastenersdirect.com

# FORGED EYE BOLTS

## Plain Pattern

Nominal Size		S		H		Y	R	E	L	M		Thread Size UNC-2A
		Shank Dia.	Shank Length Long Length	Shank Length Short Length	Eye ID	Nominal Eye OD	Eye Sect. Diameter	Overall Length	Min. Length Full Thread Long Length	Min. Length Full Thread Short Length		
1/4	0.25	0.25	1.00	1.00	0.69	1.19	0.19	2.06	0.75	0.75	1/4-20 or .250-20	
		0.28	1.06	1.06	0.81		0.25	2.38				
5/16	0.31	0.31	1.12	1.06	0.81	1.44	0.25	2.44	0.81	0.75	5/16-18 or .3125-18	
		0.34	1.19	1.13	0.94		0.31	2.75				
3/8	0.38	0.38	1.25	1.12	0.94	1.69	0.31	2.81	0.88	0.75	3/8-16 or .375-1	
		0.41	1.38	1.25	1.06		0.38	3.19				
7/16	0.44	0.44	1.38	1.13	1.00	1.81	0.34	3.06	1.00	0.75	7/16-14 or .4375-14	
		0.47	1.50	1.25	1.12		0.41	3.44				
1/2	0.50	0.50	1.50	1.13	1.12	2.12	0.44	3.50	1.12	0.75	1/2-13 or .500-13	
		0.53	1.62	1.25	1.25		0.50					
9/16	0.56	0.56	1.62	1.21	1.19	2.25	0.47	3.75	1.25	0.84	9/16-12 or .5625-12	
		0.59	1.75	1.34	1.31		0.53	4.12				
5/8	0.62	0.62	1.75	1.31	1.31	2.56	0.56	4.19	1.38	0.94	5/8-11 or .625-11	
		0.66	1.88	1.44	1.44		0.62	4.56				



545 Basket Road  
Webster, NY 14580

Toll Free: 800.691.0292 | Local: 585.265.1990 | Fax: 585.265.6678

www.fastenersdirect.com  
sales@fastenersdirect.com

# FORGED EYE BOLTS

## Plain Pattern

Nominal Size		S	H		Y	R	E	L	M		Thread Size UNC-2A
		Shank Dia.	Shank Length		Eye ID	Nominal Eye OD	Eye Sect. Diameter	Overall Length	Min. Length Full Thread		
			Long Length	Short Length					Long Length	Short Length	
3/4	0.75	0.75	2.00	1.50	1.44	2.81	0.62	4.69	1.62	1.13	3/4-10 or .750-10
		0.78	2.12	1.62	1.56		0.69	5.06			
7/8	0.88	0.88	2.25	1.75	1.56	3.19	0.75	5.31	1.81	1.31	7/8-9 or .875-9
		0.91	2.38	1.88	1.69		0.81	5.69			
1	1.00	1.00	2.50	1.94	1.69	3.56	0.88	5.94	2.06	1.50	1-8 or 1.000-8
		1.06	2.62	2.06	1.81		0.94	6.31			
1-1/8	1.12	1.12	2.75	2.13	1.94	4.06	1.00	6.69	2.31	1.69	1-1/8-7 or 1.125-7
		1.19	2.88	2.26	2.06		1.06	7.06			
1-1/4	1.25	1.25	3.00	2.38	2.12	4.44	1.09	7.31	2.50	1.88	1-1/4-7 or 1.250-7
		1.34	3.12	2.50	2.25		1.16	7.69			
1-1/2	1.50	1.50	3.50	2.75	2.44	5.19	1.31	8.56	3.00	2.25	1-1/2-6 or 1.500-6
		1.59	3.62	2.87	2.56		1.38	8.94			
1-3/4	1.75	1.75	3.75	3.18	2.75	6.00	1.50	9.50	3.19	2.62	1-3/4-5 or 1.750-5
		1.84	3.88	3.31	3.00		1.62	10.12			



545 Basket Road  
Webster, NY 14580

Toll Free: 800.691.0292 | Local: 585.265.1990 | Fax: 585.265.6678

www.fastenersdirect.com  
sales@fastenersdirect.com

# FORGED EYE BOLTS

## Plain Pattern

Nominal Size	S	H			Y	R	E	L	M		Thread Size UNC-2A				
		Shank Dia.	Shank Length						Eye ID	Nominal Eye OD		Eye Sect. Diameter	Overall Length	Min. Length Full Thread	
			Long Length	Short Length										Long Length	Short Length
2	2.00	2.00	4.00	3.62	3.06	6.88	1.75	10.56	3.38	3.00	2-4-1/2 or 2.000-4.50				
		2.09	4.25	3.87	.3.44		1.88	11.44							
2-1/2	2.50	2.50	5.00	4.50	3.81	8.50	2.19	13.19	4.25	3.75	2-1/2-4 or 2.500-4				
		2.62	5.25	4.75	4.19		2.31	14.06							

## Shoulder Pattern

Nominal Size	S	H			Y	R	E	L	M		Thread Size UNC-2A	J	D	T	U				
		Shank Dia.	Shank Length						Eye ID	Nominal Eye OD						Eye Sect. Diameter	Overall Length	Min. Length Full Thread	
			Long Length	Short Length														Long Length	Short Length
2	2.00	2.00	4.00	3.62	3.06	6.88	1.75	10.56	3.38	3.00	2-4-1/2 or 2.000-4.50								
		2.09	4.25	3.87	.3.44		1.88	11.44											
2-1/2	2.50	2.50	5.00	4.50	3.81	8.50	2.19	13.19	4.25	3.75	2-1/2-4 or 2.500-4								
		2.62	5.25	4.75	4.19		2.31	14.06											



545 Basket Road  
Webster, NY 14580

Toll Free: 800.691.0292 | Local: 585.265.1990 | Fax: 585.265.6678

www.fastenersdirect.com  
sales@fastenersdirect.com

# FORGED EYE BOLTS

## Shoulder Pattern

Nominal Size	S	H		Y	R	E	L	M		Thread Size UNC-2A	J Center Line Eye to Shoulder	D Should Dia.	T Shoulder Height	U Radius Under Shoulder	
		Shank Dia.	Shank Length					Eye ID	Nominal Eye OD						Eye Sect. Diameter
			Long Length	Short Length				Long Length	Short Length						
1/4	.25	0.25	1.00	1.00	0.69	1.19	0.19	2.22	0.75	0.75	1/4-20 or .250-20	0.69	.50	0.12	0.015
		0.28	1.06	1.06			1.81	0.25				2.53	0.81	0.56	0.19
5/16	0.31	0.31	1.12	1.06	0.81	1.44	0.25	2.66	0.81	0.75	5/16-18 or .3125-18	0.88	0.56	0.12	0.015
		0.34	1.19	1.13			0.94	0.31				2.97	1.00	0.62	0.19
3/8	0.38	0.38	1.25	1.12	0.94	1.69	0.31	3.09	0.88	0.75	3/8-16 or .375-16	1.06	0.62	0.12	0.015
		0.41	1.35	1.25			1.06	0.38				3.47	1.19	0.69	0.19
7/16	0.44	0.44	1.38	1.13	1.00	1.81	0.34	3.41	1.00	0.75	7/16-14 or .4375-14	1.19	0.75	0.19	0.015
		0.47	1.50	1.25			1.12	0.41				3.78	1.31	0.81	0.25
1/2	0.50	0.50	1.50	1.13	1.12	2.12	0.44	3.81	1.12	0.75	1/2-13 or .500-13	1.31	0.88	0.19	0.015
		0.53	1.62	1.25			1.25	0.50				4.19	1.44	0.94	0.25
9/16	0.56	0.56	1.62	1.21	1.19	2.25	0.47	4.19	1.25	0.84	9/16-12 or .5623-12	1.50	0.94	0.22	0.020
		0.59	1.75	1.34			1.31	0.53				4.56	1.62	1.00	0.28



545 Basket Road  
Webster, NY 14580

Toll Free: 800.691.0292 | Local: 585.265.1990 | Fax: 585.265.6678

www.fastenersdirect.com  
sales@fastenersdirect.com

# FORGED EYE BOLTS

## Shoulder Pattern

Nominal Size	S	H		Y	R	E	L	M		Thread Size UNC-2A	J Center Line Eye to Shoulder	D Should Dia.	T Shoulder Height	U Radius Under Shoulder	
		Shank Dia.	Shank Length					Eye ID	Nominal Eye OD						Eye Sect. Diameter
			Long Length	Short Length											
5/8	0.62	0.62	1.75	1.31	1.31	2.56	0.56	4.56	1.38	0.94	5/8-11 or .625-11	1.59	1.00	0.25	0.020
		0.66	1.88	1.44			1.44	0.62				4.94	1.72	1.06	0.31
3/4	0.75	0.75	2.00	1.50	1.44	2.81	0.62	5.06	1.62	1.12	3/4-10 or .750-10	1.72	1.12	0.25	0.020
		0.78	2.12	1.62			1.56	0.69				5.50	1.91	1.25	0.31
7/8	0.88	0.88	2.25	1.75	1.56	3.19	0.75	5.75	1.81	1.31	7/8-9 or .875-9	1.72	1.12	0.25	0.020
		0.91	2.38	1.88			1.69	0.81				6.19	1.91	1.25	0.31
1	1.00	1.00	2.50	1.94	1.69	3.56	0.88	6.44	2.06	1.50	1-8 or 1.000-8	2.22	1.50	0.38	0.060
		1.06	2.62	2.06			1.81	0.94				6.88	2.41	1.62	0.44
1-1/8	1.12	1.12	2.75	2.13	1.94	4.06	1.00	7.31	2.31	1.69	1-1/8-7 or 1.125-7	2.59	1.69	0.44	0.060
		1.19	2.88	2.26			2.06	1.06				7.75	2.78	1.81	0.50
1-1/4	1.25	1.25	3.00	2.38	2.12	4.44	1.09	8.00	2.50	1.88	1-1/4-7 or 1.250-7	2.84	1.88	0.50	0.060
		1.34	3.12	2.50			2.25	1.16				8.44	3.03	2.00	0.56



545 Basket Road  
Webster, NY 14580

Toll Free: 800.691.0292 | Local: 585.265.1990 | Fax: 585.265.6678

www.fastenersdirect.com  
sales@fastenersdirect.com

## FORGED EYE BOLTS

### *Shoulder Pattern*

Nominal Size	S Shank Dia.	H Shank Length		Y Eye ID	R Nominal Eye OD	E Eye Sect. Diameter	L Overall Length	M Min. Length Full Thread		Thread Size UNC-2A	J Center Line Eye to Shoulder	D Should Dia.	T Shoulder Height	U Radius Under Shoulder
		Long Length	Short Length					Long Length	Short Length					
1-1/2	1.50	1.50	3.50	2.75	5.19	1.31	9.22	3.00	2.25	1-1/2-6 or 1.500-6	3.19	2.12	0.50	0.060
		1.59	3.62	2.87		2.56	1.38				9.72	3.44	2.25	0.62
1-3/4	1.75	1.75	3.75	3.18	6.00	1.50	10.50	3.19	2.62	1-3/4-5 or 1.750-5	3.88	2.50	0.50	0.060
		1.84	3.88	3.31		3.00	1.62				11.12	4.12	2.62	0.62
2	2.00	2.00	4.00	3.62	6.88	1.75	11.53	3.38	3.00	2-4-1/2 or 2.000-4.50	4.25	2.88	0.62	0.060
		2.09	4.12	3.79		3.44	1.88				12.22	4.50	3.00	0.75

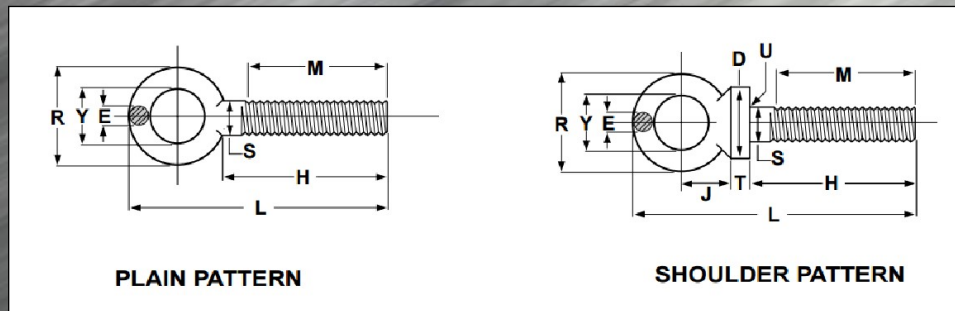


545 Basket Road  
Webster, NY 14580

Toll Free: 800.691.0292 | Local: 585.265.1990 | Fax: 585.265.6678

www.fastenersdirect.com  
sales@fastenersdirect.com

## PHILLIPS TRIM HEAD DRYWALL SCREWS



**DESCRIPTION:** A forged bolt without welds, with a head in the form of an open or closed anchor ring. Bolt shall have a unified thread pitch. Shoulder pattern eyebolts shall have an unthreaded shoulder below the anchor ring which is greater in diameter than the threaded shank.

**APPLICATIONS / ADVANTAGES:** Used in applications where a forged shank is required. I.E. in a rigging when mounted to a uniformly distributed weight.

**MATERIAL:** Eyebolts shall be made from a carbon steel which conforms to the following chemical composition requirements—Carbon 0.48% maximum, Manganese 1.00% maximum, Phosphorus 0.040% maximum, Sulfur 0.050% maximum, Silicon 0.15—0.35%.

**HEAT TREATMENT:** Bolts shall be liquid quenched and tempered before machining the threaded end.

**GRAIN SIZE:** ASTM No. 5 or finer

**TENSILE STRENGTH:** 65,000—85,000 psi.

**YIELD STRENGTH:** 30,000 psi. minimum

**ELONGATION IN 2 IN.:** 30% minimum

**REDUCTION OF AREA:** 60% minimum