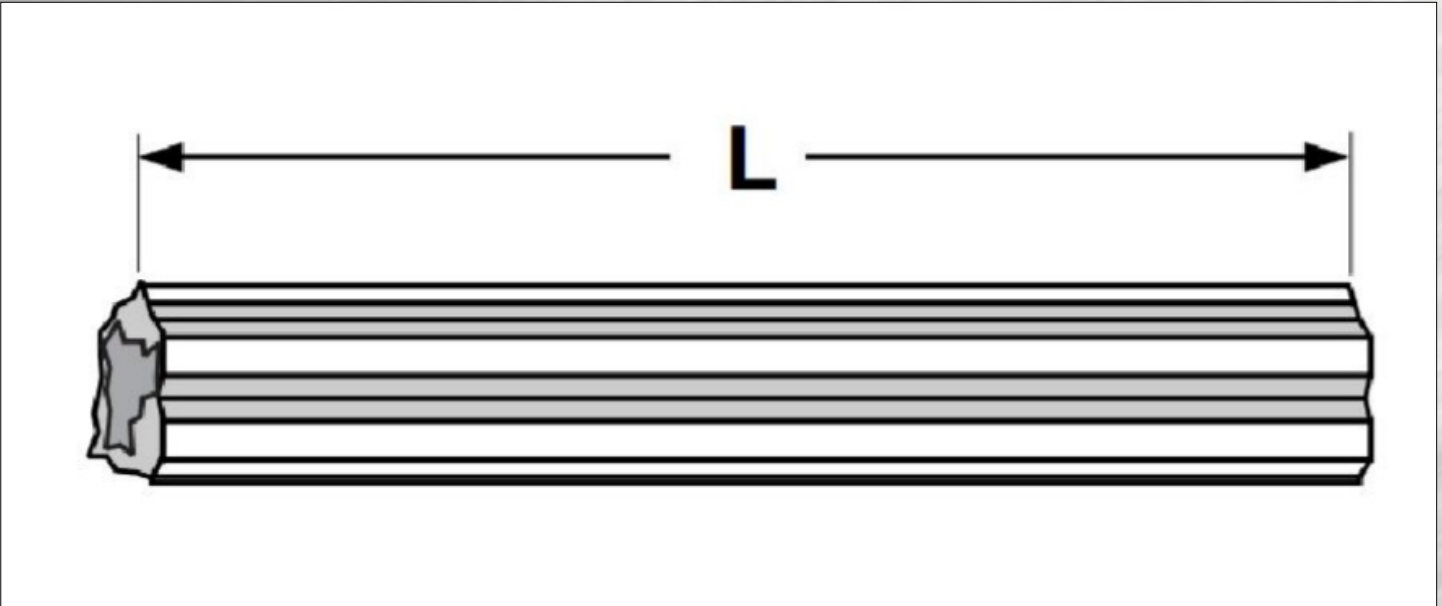


FLUTED, LIGHT DUTY PLASTIC ANCHORS



Screw Size	Length of Anchor	Drill Size	Minimum Embedment Depth	Performance Information In 4000 PSI Concrete	
				Tensile	Shear
4-6	1	3/16	1	140	215
10-12	1	1/4	1	490	350
14	1-1/2	5/16	1-1/2	615	575

DESCRIPTION: An injection-molded anchor with protruding ribs that extend from end-to-end. The openings at either end of the anchor are identical.

APPLICATION / ADVANTAGES: The fluted plastic anchor is a light-duty anchor that can be used in stone, concrete, hollow block or brick. It is not suited for applications where holding power is important and should not be installed in overhead areas. For use with self-tapping or wood screws.

MATERIAL: Engineered plastic.

TENSILE STRENGTH: See above table. These values should be reduced by at least 75% to determine the safe working load in each application.