

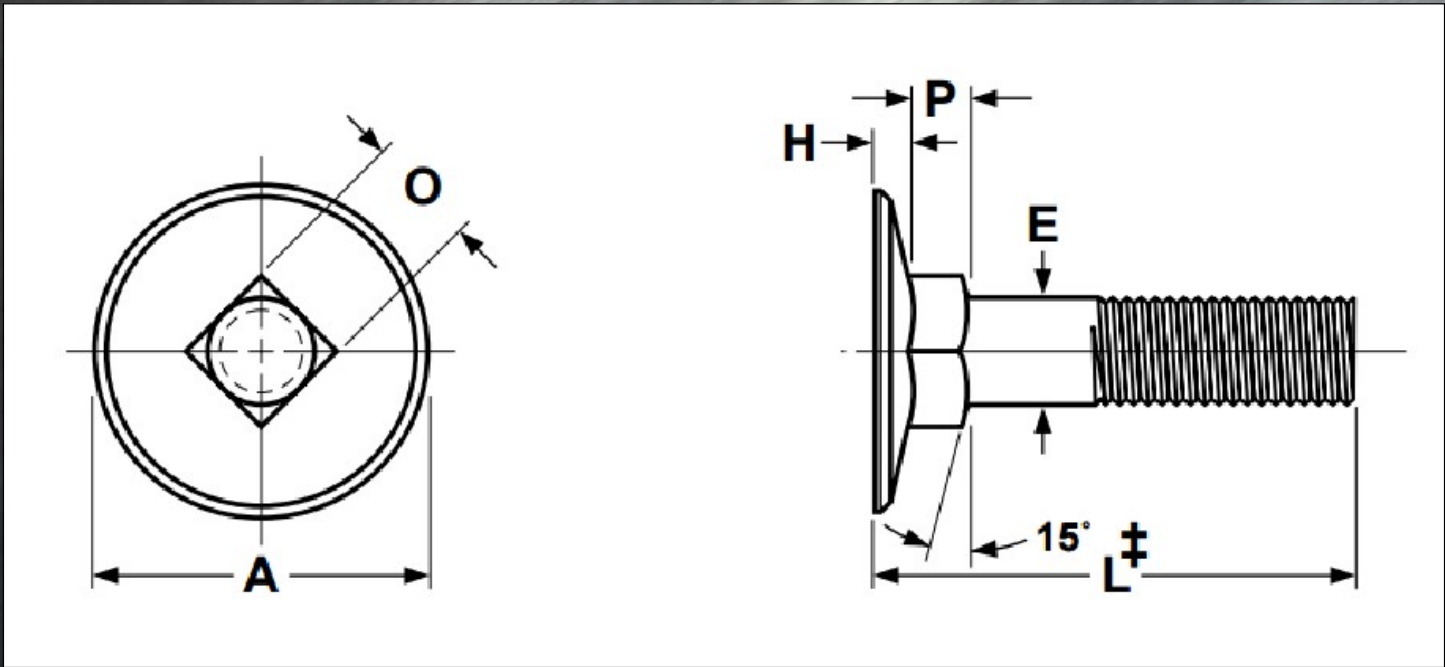


545 Basket Road
Webster, NY 14580

Toll Free: 800.691.0292 | Local: 585.265.1990 | Fax: 585.265.6678

www.fastenersdirect.com
sales@fastenersdirect.com

ELEVATOR BOLTS



Nominal Size & Threads per Inch	E		A			H		O		P	
	Body Diameter		Head Diameter			Head Height		Square Width		Square Depth	
	Max	Min	Max Edge Sharp	Min Edge Sharp	Min Edge Flat	Max	Min	Max	Min	Max	Min
1/4	0.260	0.237	1.008	0.969	0.938	0.098	0.078	0.280	0.245	0.219	0.188
5/16	0.324	0.298	1.227	1.188	1.157	0.114	0.094	0.342	0.307	0.250	0.219
3/8	0.388	0.360	1.352	1.312	1.272	0.145	0.125	0.405	0.368	0.250	0.219

Tolerance on Length	Nominal Bolt Size	Nominal Bolt Length		
		Up to 1 in., incl.	Over 1 in. to 2-1/2 in., incl.	Over 2-1/2 in. to 4 in., incl.
	1/4 thru 3/8	+0.02, -0.03	+0.02, -0.04	+0.04, -0.06

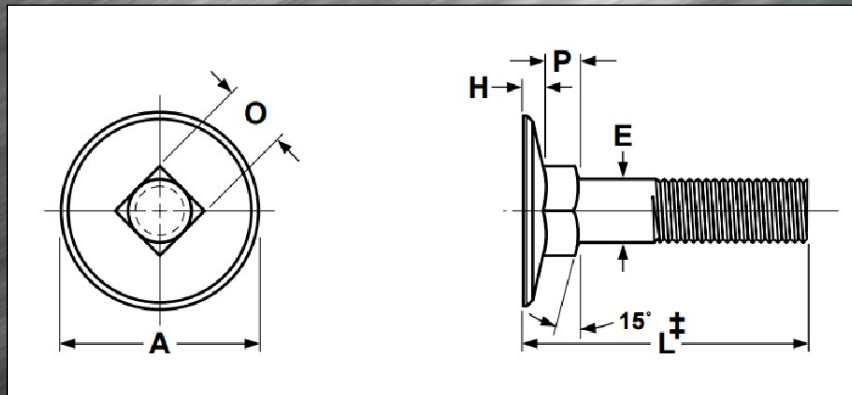


545 Basket Road
Webster, NY 14580

Toll Free: 800.691.0292 | Local: 585.265.1990 | Fax: 585.265.6678

www.fastenersdirect.com
sales@fastenersdirect.com

ELEVATOR BOLTS



DESCRIPTION: A bolt with a wide, countersunk flat head, a shallow conical bearing surface, an integrally-formed square neck under the head, and a unified thread pitch.

APPLICATIONS/ADVANTAGES: Popular use is in conveyor systems.

MATERIAL: AISI 1006—1050 or equivalent steel.

CORE HARDNESS: 1/4 through 3/8 in. diameter, all lengths: Rockwell B70 –B100

PROOF LOAD: 1/4 through 3/8 in. diameter, all lengths: 33,000 psi

YEILD STRENGTH: 1/4 through 3/8 in diameter, all lengths: 36,000 psi minimum